

Quarterly Promotions!

Deep Margin Elevation Kit

\$545



DME-01 contains:

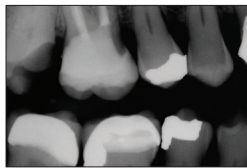
5x FXH150 3D Fusion™ Firm bands
10x FXH200 3D Fusion™ Firm bands
20x FXH300 3D Fusion™ Firm bands
50x RM500H Margin Elevation band reels
1x RMH-100 Reel Matrix™ tensioning instrument
20x FXYL 3D Fusion™ wedges
20x FXBL 3D Fusion™ wedges
20x FXOR 3D Fusion™ wedges
20x FXGR 3D Fusion™ wedges

Receive a **FREE** pack of 6.3 mm Regular Matrices (value \$129) **with purchase of DME-01 or RMK05 kit**

(FREE pack contains: ReelMatrix 6.3 mm Regular Matrices (qty. of 50) RM200H)



Clinical Case: The margin elevation technique allows proper isolation and elevation of deep margin areas prior to restoring with an indirect partial coverage restoration (inlay or onlay). The use of the Garrison® Reel Matrix™ margin elevation band allows proper adaptation and seal of these deep areas so that a composite margin elevation can be performed.



Pre-op X-ray shows the margin location for #17 subgingivally prior to elevation.



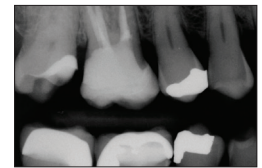
Seat the margin elevation band subgingivally. The narrowness of the matrix will allow it to slide subgingivally and seal the margin efficiently.



Seal the dentin and elevate the deep margin with restorative composite.

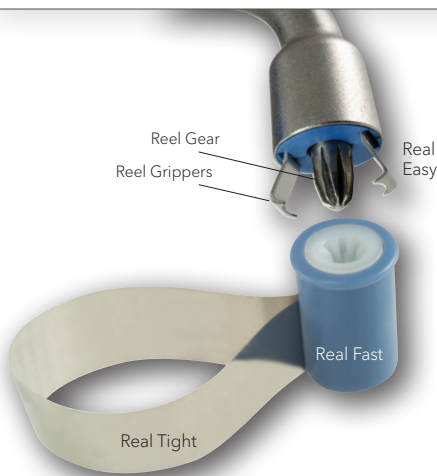


Remove the matrix and finish with a #12 blade to remove any flash. The deep margin has been relocated 1-2 mm supragingival for predictable isolation and delivery of an indirect bonded restoration.



Post-op X-ray shows the completed margin elevation prior to final restoration being completed.

Photos courtesy of Matthew A. Nejad DDS, Beverly Hills, CA



Reel Matrix Kit

\$715

RMK05 contains:

10 RM100D 5mm dead-soft matrices
10 RM200D 6.3mm dead-soft matrices
10 RM100H 5mm regular matrices
10 RM200H 6.3mm regular matrices
10 RM100B 5mm blue matrices
10 RM200B 6.3mm blue matrices
20 RM500H Margin Elevation band reels
1 RMH-100 Reel Matrix™ tensioning instrument
1 PerForm™ instruments (set of 2)



Canadian MSRP

*To redeem goods, email a scanned copy of your dealers invoice dated 1/7/25 - 30/9/25 to: Garrison Dental Solutions, Attn: Liz Kammers to ekammers@garrissondental.com with INCA25Q3 in the Subject line. Allow 4-6 weeks for delivery.

Garrison

Toll-free 888.437.0032
gds@garrissondental.com
www.garrissondental.com

ORDER TODAY! 888.437.0032
or contact your Dealer Representative.

INCA25Q3

© 2025 Garrison Dental Solutions, LLC

Garrison's Reel Matrix and Deep Margin Elevation Kits are a perfect recommendation-especially for offices facing ongoing backorders with Automatrix.

6 minute YouTube video comparing Automatrix and reelmatrix

<https://www.youtube.com/watch?v=mgO5URxkvL0&t=120s>

Q3 Promo ABOVE:

Purchase either a Deep Margin Elevation kit or Reel Matrix Kit and get a FREE pack of reels (value \$129)

- | Kits + free refills offer the best value as handles alone sell for \$375 CAD MSRP.
- | If an extra handle is needed, it's item RMH-100

FAQs:

- | Sterilizing the handle? Easy-autoclavable per standard protocol (steam autoclave at 134C (273F) for 3 minutes
- | Handle issues? Occasionally customers will report a problem with their handle. If anyone experiences trouble, it's likely due to an improper reel size match, not the fault of the handle itself. If this happens, I can connect you with Stephanie from Garrison and we can discuss further.

Reel Matrix Deep Margin Elevation kit provides clinical confidence with predictable and precise restorations.

For more product info and videos on deep margin elevation technique, click here:

<https://www.garrisondental.com/products/reelmatrixtm-and-deep-margin-elevation-kits#DME-01>