



Special Offers* for Canadian Dental Professionals
July 1 – September 30, 2025

3M oral care
is now part of
Solventum

3M.ca/
DentalPromos

Restorative Solutions

4+1* 3M™ Filtek™ Brand Restoratives (Mix and Match)

This includes:

3M™ Filtek™ Supreme
Ultra Universal Restorative



3M™ Filtek™ One
Bulk Fill Restorative



3M™ Filtek™
Universal Restorative



3M™ Filtek™
Bulk Fill Flowable
Restorative



3M™ Filtek™
Supreme Flowable
Restorative



2+1* 3M™ Filtek™ Easy Match Universal Restorative



Crown and Bridge Solutions

4+1* 3M™ Dental Impression Materials

- 3M™ Impregum™ Brand Impression Materials**
- 3M™ Imprint™ Brand Impression Materials**

**Applies only to select products from these categories.



Customer Care Centre 1-888-363-3685 | 3M.ca/DentalPromos

Solventum Authorized Canadian Distributors


Henry Schein Canada, Inc.
Niagara-on-the-Lake, ON
1-800-669-5558


Sinclair Dental Co. Ltd.
North Vancouver, BC
1-800-663-7393


Patterson Dental Canada
Montreal, QC
1-800-873-7683


K-Dental Inc.
Markham, ON
1-800-455-3358


Clinical Research Dental
London, ON
1-800-255-3444


Dens 'N' Dente Healthcare
Richmond Hill, ON
1-866-443-9998


Dental Brands
Markham, ON
1-888-441-0443

*Please see your Authorized Solventum Distributor for eligible product information and full terms and conditions.
Solventum reserves the right to change or cancel these promotions at any time without notice. Offers available only in Canada.
*Goods received at no additional charge must be of equal or lesser value.

Solventum Dental Solutions
1-888-363-3685














Solventum, ESPE, Filtek, Impregum and Imprint are trademarks of Solventum or its affiliates. 3M and the 3M logo are trademarks of 3M.
© Solventum 2025. All other trade names referenced are the service marks, trademarks or registered trademarks of their respective companies.

In 2024, 3M Health Care spun off from 3M Company, creating a new, standalone, world-class healthcare company. That new company is called Solventum. Our name may be new, but our experienced team, trusted technologies and exceptional service and support aren't changing. We're here to help you create many more beautiful, healthy smiles. Learn more at Solventum.com.

3M™ Filtek™ Dental Restoratives

A full line of restorative solutions to fit your unique needs.

3M™ Filtek™ Dental Restoratives have been used in more than 2 billion restorations worldwide. Our family of Filtek dental restoratives lets you choose just the right option to fit any clinical need—from highly esthetic, to highly simple for an easier day.

Properties	Esthetics & Versatility		Esthetics & Simplicity		Efficiency & Simplicity	
	3M™ Filtek™ Supreme Ultra Universal Restorative	3M™ Filtek™ Supreme Flowable Restorative	3M™ Filtek™ Easy Match Universal Restorative	3M™ Filtek™ Universal Restorative	3M™ Filtek™ One Bulk Fill Restorative	3M™ Filtek™ Bulk Fill Flowable Restorative
 Primary benefits	<ul style="list-style-type: none"> Exceptional esthetics with natural-looking fluorescence Outstanding strength for anterior and posterior 	<ul style="list-style-type: none"> Virtually no bubbles or “run-on” Ergonomic design Selection of cannula tip sizes (20G, 27G) 	<ul style="list-style-type: none"> Quick, easy and intuitive shade selection without sacrificing opacity Simplified single-layer restorations, with no blocker needed Naturally-adaptive opacity 	<ul style="list-style-type: none"> Universal opacity for consistent esthetics Pink Opaquer to mask dark areas Low shrinkage stress 	<ul style="list-style-type: none"> Increased opacity for improved esthetics One-step placement up to 5mm 	<ul style="list-style-type: none"> Virtually no bubbles or “run-on” One-step placement up to 4mm Ergonomic design
 Number of shades	36 (Dentin, Body, Enamel, Translucent)	12	3	8 (plus Extra White and Pink Opaquer)	5	4
 TRUE nanotechnology	Yes	Yes	Yes	Yes	Yes	No
 Handling	Firm	Flows on demand	Firm	Creamy	Sculptable	Adapts easily
 Polish retention	Excellent					N/A*
 Wear resistance	Excellent					N/A*
 Safe for composite warming and injection molding^{1,2}	Capsules	Syringes & Capsules	Capsules	Capsules	Capsules	Syringes & Capsules
						

¹ Warm capsules to up to 70°C (158°F) for up to 1 hour. ² Warm flowable syringes to up to 70°C (158°F) for up to 1 hour, up to 25 times. ³ Internal data.
*Filtek Bulk Fill Flowable's intended use requires allowing at least 2 mm on the occlusal cavosurface for a universal or posterior composite.

For a full list of indications, please refer to the product Instructions for Use.

3M Health Care is now Solventum

Shade matching just got simpler.

3M™ Filtek™ Easy Match Universal Restorative

- ▶ Intuitive Shade Selection
- ▶ Naturally-Adaptive Opacity
- ▶ Reduced Inventory





Part of the 3M™ Filtek™ Dental Restorative family

Trusted for more than
50 years. 2 billion
restorations – and counting.

Powered by our **TRUE** nanotechnology, 3M™ Filtek™ Dental Restoratives have helped clinicians around the world create over 2 billion restorations. The Filtek family gives you the options you need for virtually any clinical situation: from anterior to posterior, high-end esthetics to highly efficient procedures, and everything in between. Whether you need a universal, flowable or bulk-fill composite, anterior or posterior, the Filtek family gives you esthetic and efficient solutions.

“I really like Filtek Easy Match Universal Restorative. The composite handles very well and polishes very nicely. The simplified shade system yields very nice results without layering.”

– Dr. Nick Marongiu
La Jolla, CA, USA



Excellent polish
retention



Excellent strength
and wear resistance



Firm
handling



Safe for composite
warming and
injection moulding¹

1. Warm capsules up to 70°C/158°F for up to 1 hour.

3M™ Filtek™ Easy Match Universal Restorative

Bright. Natural. Warm. Just 3 shades deliver an excellent match to almost any patient's smile. That means a simpler workflow for single-shade restorations – with natural-looking results to make your patients proud.

3M™ Filtek™ Easy Match Universal Restorative is a streamlined system built on clinically proven nanotechnology, a hallmark of the globally trusted family of 3M™ Filtek™ Dental Restoratives. It simplifies shade matching by allowing you to go from observation to selection, quickly and intuitively.

Anterior or posterior. Without a blocker – and without sacrificing opacity.

Experience shade matching made simple. Easy. Intuitive.

- ✓ Just 3 shades: Bright, Natural, Warm
- ✓ No complicated shade guide
- ✓ No blocker required

Simplicity without sacrifice.

Some simplified shading systems come with esthetic drawbacks. Filtek Easy Match Universal Restorative both delivers an excellent shade match and blends with surrounding dentition, for natural-looking smiles.



"Filtek Easy Match provides a simple solution for everyday restorations. Streamline your inventory and deliver restorations that disappear!"

– Dr. Thomas Giacobbi
Chandler, AZ, USA

Shade selection is intuitive and straight forward:

Chroma, or colour intensity, is only one of the components leading to a great shade match. Even a composite of the “right colour” can stand out from surrounding dentition if its **value** (relative lightness/darkness) or **opacity** is not a good match as well.

Together, the 3 shades of 3M™ Filtek™ Easy Match Universal Restorative cover the VITA classical shades – no blocker needed.

“Filtek Easy Match Universal Restorative simplifies shade matching and allows very esthetic restorations in a more streamlined approach.”

– Dr. Augusto Robles
Anniston, AL, USA

Bright



Representative example of Bright tooth shade.



Bright: low chroma, high value

Natural



Representative example of Natural tooth shade.



Natural: balanced, mid-range chroma and value

Warm



Representative example of Warm tooth shade.



Warm: high chroma, low value

Primary benefits you'll love

- Excellent shade match for most anterior and posterior restorations
- Quick, easy and intuitive shade selection without sacrificing opacity
- Simplified single-layer restorations, with no blocker needed
- Streamlined inventory helps reduce waste of infrequently used shades
- Firm handling
- Suitable for composite warming, which lowers extrusion force¹ without changing physical properties²



1. Internal Data

2. When warmed according to our IFU (capsules: up to 70°C/158°F for up to 1 hour)

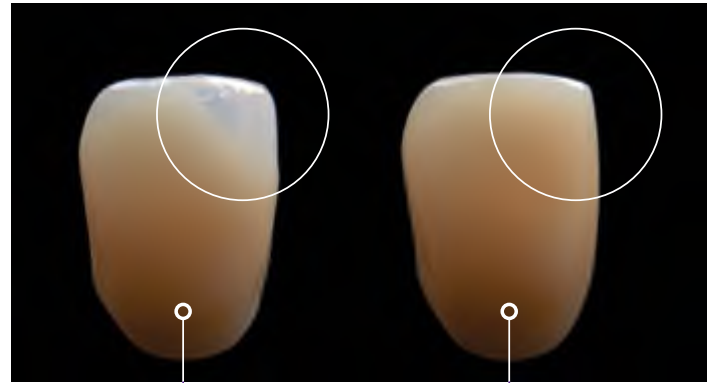
Courtesy of Dr. Brian Baliwas

How does it work?

With the power of naturally-adaptive opacity.

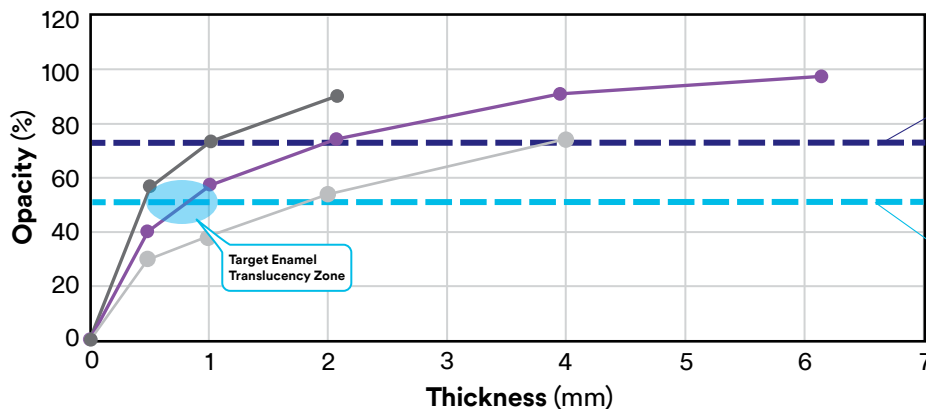
Unlike some single-shade systems, 3M™ Filtek™ Easy Match Universal Restorative doesn't need a blocker to mask the darkness of the oral cavity in anterior restorations. Its naturally-adaptive opacity delivers Enamel-like translucency at thicknesses of 0.5 to 1 mm – exactly where you need it for the bevel and incisal edge. In thicknesses ≥ 2 mm everywhere else, it delivers a Dentin-like opacity.

All composites become more translucent when applied in thinner layers. But the naturally-adaptive opacity of Filtek Easy Match Universal Restorative is optimally aligned with both dentin and enamel, helping it blend with surrounding tooth structure and delivering a natural look.



Tokuyama
OMNICHROMA®
No blocker used

3M™ Filtek™ Easy Match Universal
Restorative, Natural Shade
No blocker needed



Dentin Value
3M™ Filtek™ Easy Match shows
Dentin-like opacity
at thicknesses ≥ 2 mm

Enamel Value
3M™ Filtek™ Easy Match shows
Enamel-like translucency
at thicknesses of 0.5 - 1 mm

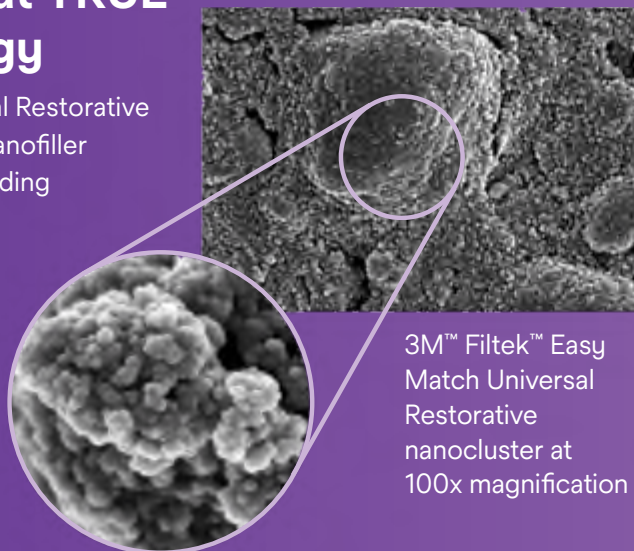
Source: Internal Data*

— 3M™ Filtek™ Supreme Ultra Universal Restorative A2-D — Tokuyama OMNICHROMA® (no blocker used)
— 3M™ Filtek™ Easy Match Universal Restorative

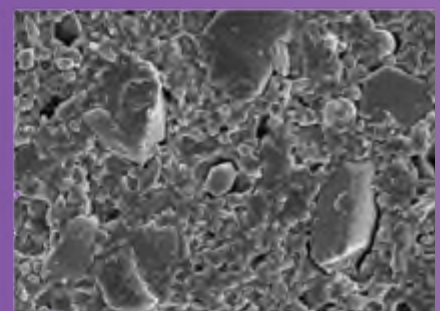
A closer look at TRUE nanotechnology

Filtek Easy Match Universal Restorative features the same **TRUE** nanofiller technology used in our leading Filtek Dental Restoratives.

The unique nanoclusters enable excellent wear resistance and help the composite retain a smooth gloss.



3M™ Filtek™ Easy Match Universal Restorative nanocluster at 100x magnification



Leading competitive composite

SEM photos courtesy of Dr. J. Perdigao, University of Minnesota.



3M™ Filtek™ Easy Match Universal Restorative – Bright

Item #	Product Information
6110B	(20) Capsules, 0.2 g/each
6120B	(1) Syringe, 4 g/each



3M™ Filtek™ Easy Match Universal Restorative – Natural

Item #	Product Information
6110N	(20) Capsules, 0.2 g/each
6120N	(1) Syringe, 4 g/each



3M™ Filtek™ Easy Match Universal Restorative – Warm

Item #	Product Information
6110W	(20) Capsules, 0.2 g/each
6120W	(1) Syringe, 4 g/each

3M™ Filtek™ Easy Match Universal Restorative – Intro Kits

Item #	Product Information
6110K	(60) Capsules, 0.2 g/each: 20 each of shades Bright, Natural, and Warm
6120K	(3) Syringes, 4 g/each: 1 each of shades Bright, Natural, and Warm



3M.ca/FiltekEasyMatch



Warranty: 3M warrants this product will be free from defects in material and manufacture at the time of purchase. 3M MAKES NO OTHER WARRANTIES INCLUDING ANY IMPLIED WARRANTY OF MERCHANTABILITY OR FITNESS FOR A PARTICULAR PURPOSE. User is responsible for determining the suitability of the product for user's application. If this product is defective within the warranty period, your exclusive remedy and 3M's sole obligation shall be repair or replacement of the 3M product.

Limitation of Liability: Except where prohibited by law, 3M will not be liable for any loss or damage arising from this product, whether direct, indirect, special, incidental or consequential, regardless of the theory asserted, including warranty, contract, negligence or strict liability.



Solventum Dental Solutions
75 Courtneypark Drive West Unit 4
Mississauga, ON L5W 0E3
Canada

*Source: Internal data. Tokuyama OMNICHROMA®
Lot #098E53, #002EY8; Filtek™ Easy Match Universal
Restorative Lot #9533695, #NE57998.

©Solventum 2024. Solventum, the S logo and Filtek are trademarks of Solventum or its affiliates. 3M and the 3M logo are trademarks of 3M. Other trademarks are the property of their respective owners. All rights reserved. 70-2013-8272-1

Customer Choice Program

To qualify: Purchase must include a conversion* in one (1) of five (5) categories.

1

Adhesives



2

Cements



3

Composites



4

Impression Materials



5

Preventive Care



Spend \$4,200 MSRP on eligible products for a **3M™ Elipar™ DeepCure-S LED Curing Light**

–or–

3M™ Pentamix™ 3 Automatic Mixing Unit at no additional charge.[†]



Spend \$3,200 MSRP on eligible products for a **3M™ Paradigm™ DeepCure LED Curing Light** at no additional charge.[†]



*\$600 MSRP minimum purchase requirement in the converted category.

Offer valid January 1 – December 31, 2025 or while supplies last.

A limit of \$1,000 on 3M™ Stainless Steel Crowns can go towards the total purchase requirement.

Bonus Offer <i>(select one)</i>			
Quantity	Item #	Product Name	MSRP Total of Purchased Products
-----	76976	3M™ Elipar™ DeepCure-S LED Curing Light	\$ -----
-----	77876	3M™ Pentamix™ 3 Automatic Mixing Unit	\$ -----
-----	76974	3M™ Paradigm™ DeepCure LED Curing Light	\$ -----

*Please see your Solventum Authorized Distributor or Solventum sales representative for eligible product information and full terms and conditions. To redeem your no charge equipment, contact your Solventum sales representative. To qualify, the purchase must include a conversion in one of the five categories outlined. Solventum reserves the right to not process a promotional offer if a competitive conversion has not been achieved. Products must be purchased together on one invoice dated January 1 – December 31, 2025 (multiple invoices are accepted from a single purchase order when order cannot ship complete). Solventum reserves the right to change or cancel this promotion at any time without notice. Offer available only in Canada.

Requests must be submitted no later than January 31, 2026.

No returns or exchanges on no charge equipment will be accepted. Offer void if purchased product is returned.

Find a Solventum Authorized Distributor at: 3M.ca/WhereToBuy.

